



# SCHOOLS THAT WE VISITED IN PORTUGAL

All You Need to Know



## SECONDARY SCHOOL ANTÓNIO NOBRE

It was the first school that we visited during Erasmus+ project. This school is located in Porto.



## SECONDARY SCHOOL ALBERTO SAMPAIO

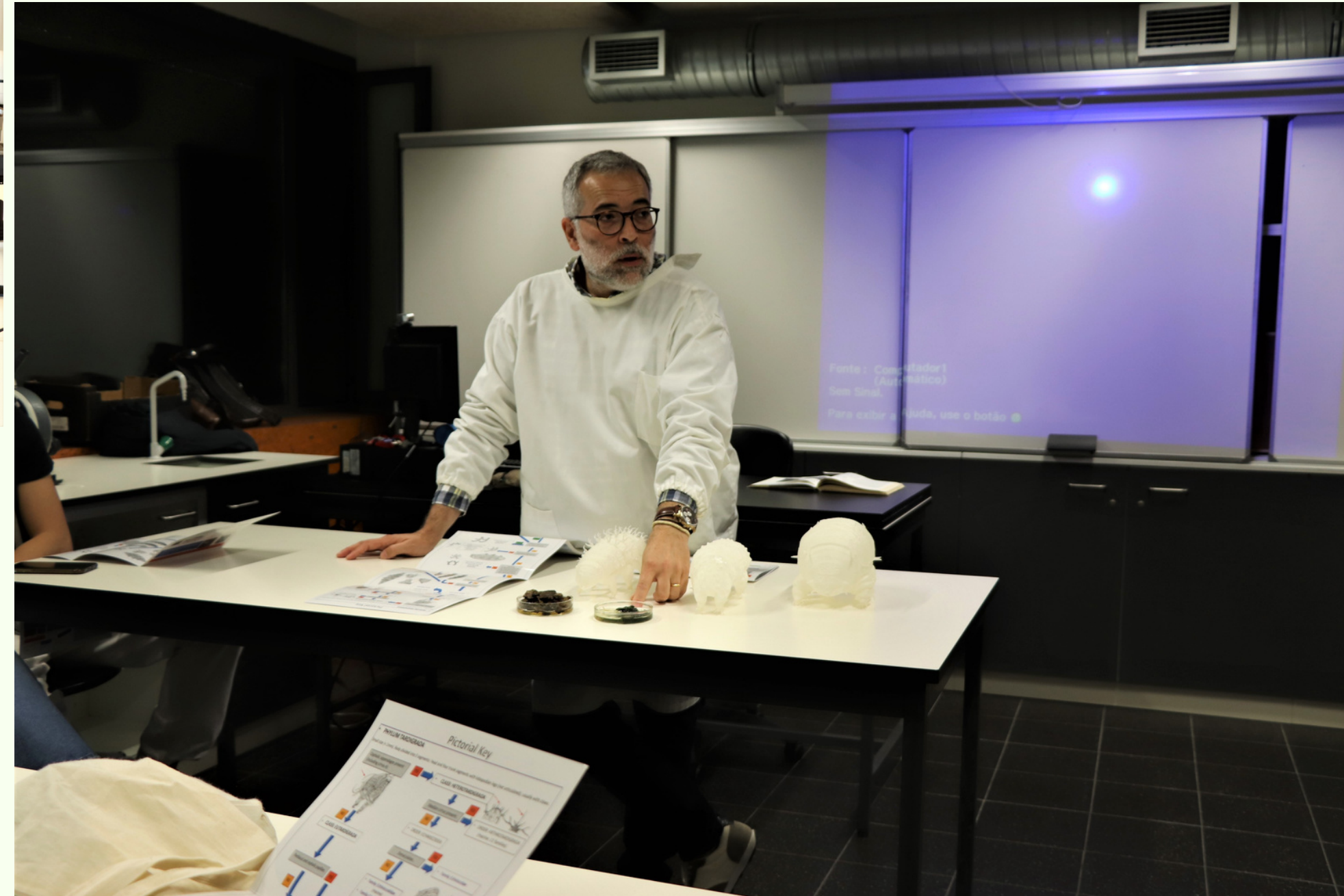
It was the second and the last secondary school that we have seen. This school is located in Braga.

# SCHOOL IN BRAGA





# BIOLOGY CLASSES





# IT CLASSES

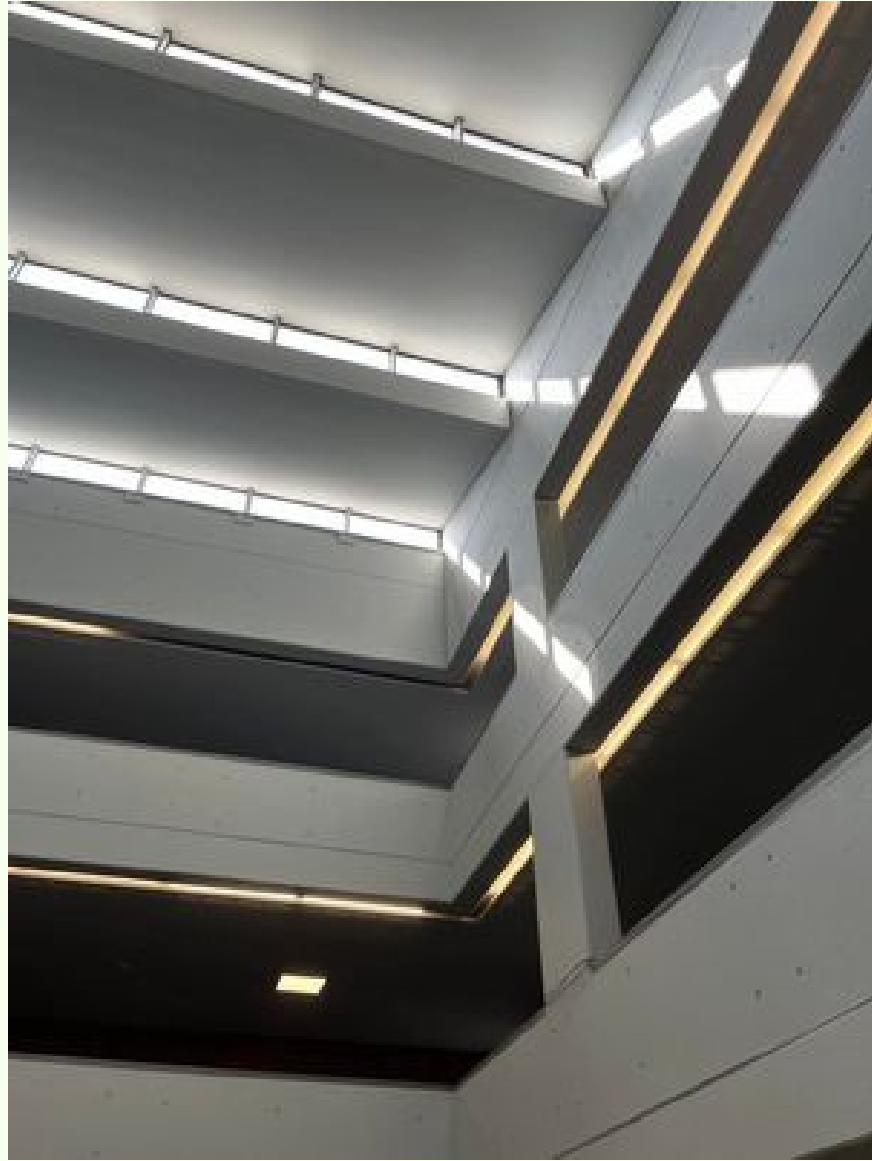






**LIBRARY**





# MODERNITY







# OUR COMPANIONATE TEAM





# SCHOOL IN PORTO







# TENNIS







# PHYSICAL EDUCATION





# PRESENTATION DAY





# WHAT WERE WE DOING IN A FREE TIME

